

FIRE-RESISTANCE DESIGN

Assembly Usage Disclaimer

BXUV - Fire Resistance Ratings - ANSI/UL 263 Certified for United States

BXUV7 - Fire Resistance Ratings - CAN/ULC-S101 Certified for Canada

See General Information for Fire-resistance Ratings - ANSI/UL 263 Certified for United States Design Criteria and Allowable Variances

See General Information for Fire Resistance Ratings - CAN/ULC-S101 Certified for Canada Design Criteria and Allowable Variances

Design No. W433

October 01, 2018

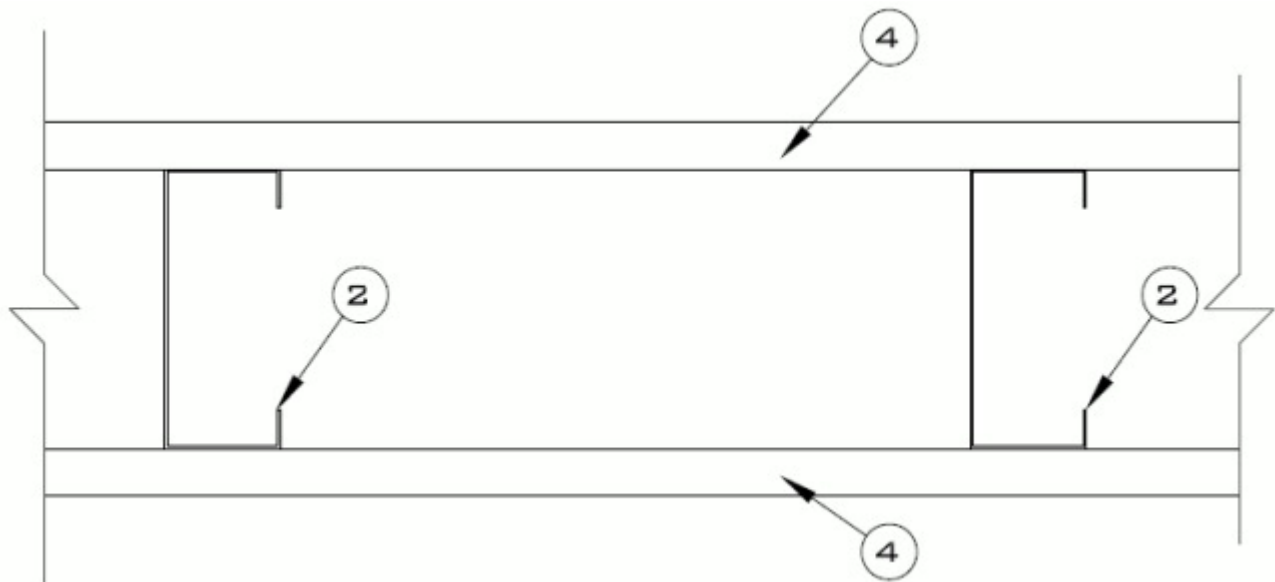
Nonbearing Wall Ratings — 1/2 Hr. (See Items 1, 2 and 4)

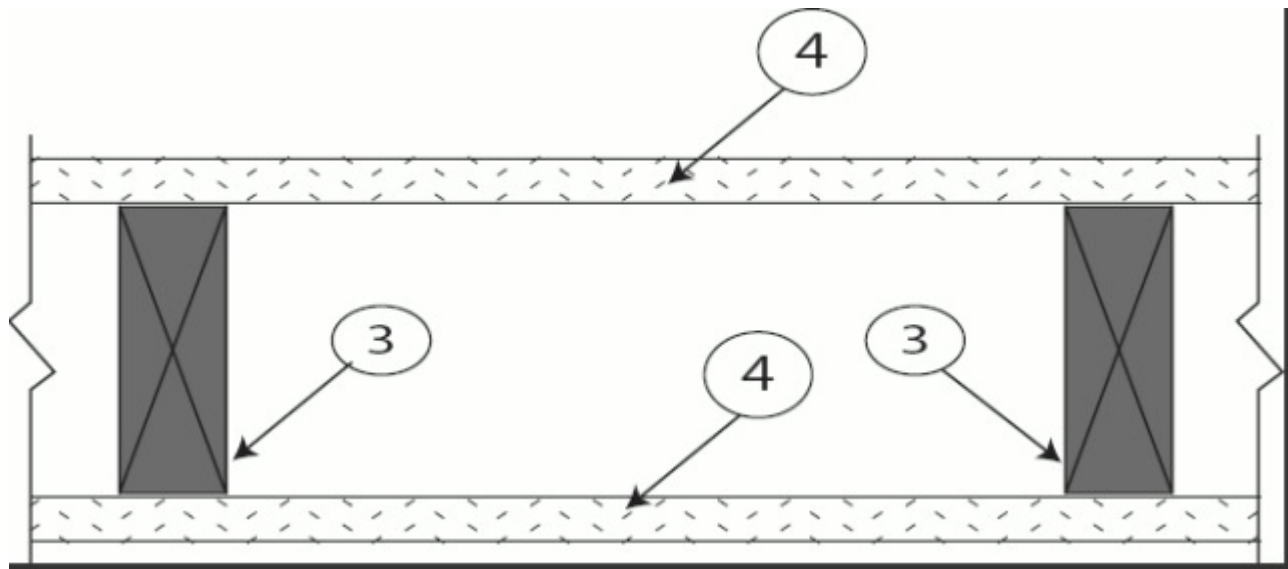
Bearing Wall Rating — 1/2 Hr. (See Items 3 and 4)

Finish Rating — (See Item 3)

Loaded Per 2012 NDS Supplement, ASD Method, Wall Braced by Sheathing, 100% of Design Load Applied to Wall.

*** Indicates such products shall bear the UL or cUL Certification Mark for jurisdictions employing the UL or cUL Certification (such as Canada), respectively.**





1. Framing Members* — Floor and Ceiling Runner — (Not Shown — For the 1/2 Hour Nonbearing Wall Rating) — Proprietary channel shaped runners, min depth to accommodate stud size , attached to floor and ceiling with fasteners 24 in. OC. max.
CALIFORNIA EXPANDED METAL PRODUCTS CO — Viper20™ Track, Viper25™ Track

CRACO MFG INC — SmartTrack 20™ Track, SmartTrack 25™ Track

DMFCWBS L L C — ProTRAK

MARINO/WARE, DIV OF WARE INDUSTRIES INC — Viper20™ Track, Viper20™ Track VT100, Viper25™ Track

FUSION BUILDING PRODUCTS — Viper20™ Track, Viper20™ Track VT100, Viper25™ Track

IMPERIAL MANUFACTURING GROUP INC — Viper20™ Track, Viper20™ Track VT100, Viper25™ Track

SCAFCO STEEL STUD MANUFACTURING CO — Type SUPREME D24/30EQD and Type SUPREME D20

STUDCO BUILDING SYSTEMS — CROCSTUD Track

SUPER STUD BUILDING PRODUCTS — The Edge

TELLING INDUSTRIES L L C — TRUE-TRACK™, Viper20™ Track, Viper25™ Track

1A. Floor and Ceiling Runners — (Not Shown - For the 1/2 Hour Nonbearing Wall Rating) — As an alternate to Item 1. Channel shaped, fabricated from min 25 MSG (0.018 in. min. bare metal thickness) corrosion-protected steel, min width to accommodate stud size, with min 1-1/4 in. long legs, attached to floor and ceiling with fasteners 24 in. OC max.

1B. Floor and Ceiling Runners — (Not Shown - For the 1/2 Hour Nonbearing Wall Rating) — As an alternate to Item 1. For use with Item 2C. Channel shaped, fabricated from min 25 MSG (0.018 in. min. bare metal thickness), min 3-1/2 in wide, to accommodate stud size, with min 1-1/4 in. long legs, attached to floor and ceiling with fasteners 24 in. OC max.

STEEL INVESTMENT GROUP L L C — AlphaTRAK

1C. Framing Members* — Floor and Ceiling Runner — (Not Shown — For the 1/2 Hour Nonbearing Wall Rating) — as an alternate to Item 1. For use with Item 2D. Channel shaped runners, fabricated from min. 25 MSG (0.018 in. min. bare metal thickness), min depth to accommodate stud size, with min 1-1/4 in. long legs, attached to floor and ceiling with fasteners 24 in. OC. max.

CALIFORNIA EXPANDED METAL PRODUCTS CO — Viper X Track

2. Framing Members* — Steel Studs — For the 1/2 Hour Nonbearing Wall Rating — Proprietary channel shaped studs, min. 2-1/2 in. deep spaced a max of 24 in. OC. Studs to be cut 3/4 in less than the assembly height

CALIFORNIA EXPANDED METAL PRODUCTS CO — Viper20™, Viper25™

CRACO MFG INC — SmartStud20™, SmartStud25™

DMFCWBS L L C — ProSTUD

MARINO/WARE, DIV OF WARE INDUSTRIES INC — Viper20™, Viper25™

FUSION BUILDING PRODUCTS — Viper20™, Viper25™

IMPERIAL MANUFACTURING GROUP INC — Viper20™, Viper25™

SCAFCO STEEL STUD MANUFACTURING CO — Type SUPREME D24/30EQD and Type SUPREME D20

STUDCO BUILDING SYSTEMS — CROCSTUD**SUPER STUD BUILDING PRODUCTS — The Edge****TELLING INDUSTRIES L L C — TRUE-STUD™, Viper20™, Viper25™**

2A. Steel Studs — — For the 1/2 Hour Nonbearing Wall Rating - As an alternate to Item 2, for use with Item 1A. Channel shaped, fabricated from min 25 MSG (0.018 in. min. bare metal thickness) corrosion-protected steel, min 2-1/2 in. deep, width as indicated under Item 5, min 1-1/4 in. flanges and 1/4 in. return, spaced a max of 24 in. OC. Studs to be cut 3/8 to 3/4 in. less than assembly height.

2B. Framing Members* — Steel Studs — (For the 1/2 Nonbearing Wall Rating). As an alternate to Item 2 - For use with Item 1 (3-5/8 in. wide track), channel shaped studs, fabricated from min 25 MSG corrosion-protected steel, 1-1/4 in. wide by 3-5/8 in. deep, spaced a max of 24 in. OC. Studs to be cut 3/8 to 3/4 in. less than assembly height.

MARINO/WARE, DIV OF WARE INDUSTRIES INC — StudRite™

2C. Framing Members* — Steel Studs — (For the 1/2 Nonbearing Wall Rating) — As an alternate to Item 2, for use with Item 1B. Channel shaped, fabricated from min 25 MSG (0.018 in. min. bare metal thickness) min. 3-1/2 in. deep, min 1-1/4 in. flanges and 1/4 in. return, spaced a max of 24 in. OC. Studs to be cut 3/8 to 3/4 in. less than assembly height.

STEEL INVESTMENT GROUP L L C — AlphaSTUD

2D. Framing Members* — Steel Studs — (For the 1/2 Hour Nonbearing Wall Rating) — As an alternate to Item 2, for use with Item 1C, channel shaped studs, fabricated from min. 25 MSG (0.018 in. min. bare metal thickness), min. 2-1/2 in. deep spaced a max of 24 in. OC. Studs to be cut 3/4 in less than the assembly height.

CALIFORNIA EXPANDED METAL PRODUCTS CO — Viper X

3. Wood Studs — (As an alternate to Items 1 and 2 — For the 1/2 Hour Bearing Wall Rating) — Nom 2 by 4 in. spaced 16 in. OC max, effectively firestopped. When wood studs are used, Finish Rating is 19 Min.

4. Gypsum Board* — 5/8 in. thick, 48 in. wide, with beveled, square, or tapered edges, applied either horizontally or vertically. Horizontal joints need not be backed

by steel framing. Horizontal edge joints and horizontal butt joints on opposite sides of studs need not be staggered. Horizontal edge joints and horizontal butt joints in adjacent layers need not be staggered.

1/2 Hour Bearing Rating On Wood Studs — Single layer secured to studs with 1-1/4 in. long Type S or Type W steel screws spaced 16 in. OC at the perimeter and in the field. When resilient channels are used gypsum boards secured with 1 in. long Type S steel screws spaced 16 in. OC at the perimeter and in the field.

1/2 Hour Nonbearing Rating On Steel Studs — Single layer secured to studs or resilient channels with 1 in. long Type S steel screws spaced 12 in. OC at the perimeter and in the field.

AMERICAN GYPSUM CO — Types AGX-1, LightRoc, LightRoc 30

5. Joint Tape and Compound — Vinyl or casein, dry or premixed joint compound applied in two coats to joints and screw heads of outer layers. Paper tape, nom 2 in. wide, embedded in first layer of compound over all joints of outer layer panels. Paper tape and joint compound may be omitted when gypsum panels are supplied with a square edge.

6. Batts and Blankets* — (Optional, Not Shown) — Placed in stud cavities, any glass fiber or mineral wool insulation bearing the UL Classification Marking as to Surface Burning Characteristics and/or Fire Resistance. See **Batts and Blankets*** (BKNV or BZJZ) Categories for names of Classified companies.

7. Furring Channels — (Optional, Not Shown) — Resilient furring channels fabricated from min 25 MSG corrosion-protected steel, spaced vertically a max of 24 in. OC. Flange portion attached to each intersecting stud with 1/2 in. long Type S-12 steel screws for steel studs and 1-1/4 in. long Type S or Type W screws for wood studs.

*** Indicates such products shall bear the UL or cUL Certification Mark for jurisdictions employing the UL or cUL Certification (such as Canada), respectively.**

Last Updated on 2018-10-01

Design/System/Construction/Assembly Usage Disclaimer

- Authorities Having Jurisdiction should be consulted in all cases as to the particular requirements covering the installation and use of UL Certified products, equipment, system, devices, and materials.
- Authorities Having Jurisdiction should be consulted before construction.
- Fire resistance assemblies and products are developed by the design submitter and have been investigated by UL for compliance with applicable requirements. The published information cannot always address every construction nuance encountered in the field.
- When field issues arise, it is recommended the first contact for assistance be the technical service staff provided by the product manufacturer noted for the design. Users of fire resistance assemblies are advised to consult the general Guide Information for each product category and

each group of assemblies. The Guide Information includes specifics concerning alternate materials and alternate methods of construction.

- Only products which bear UL's Mark are considered Certified.

The appearance of a company's name or product in this database does not in itself assure that products so identified have been manufactured under UL's Follow-Up Service. Only those products bearing the UL Mark should be considered to be Certified and covered under UL's Follow-Up Service. Always look for the Mark on the product.

UL permits the reproduction of the material contained in the Online Certification Directory subject to the following conditions: 1. The Guide Information, Assemblies, Constructions, Designs, Systems, and/or Certifications (files) must be presented in their entirety and in a non-misleading manner, without any manipulation of the data (or drawings). 2. The statement "Reprinted from the Online Certifications Directory with permission from UL" must appear adjacent to the extracted material. In addition, the reprinted material must include a copyright notice in the following format: "© 2019 UL LLC".

UL and the UL logo are trademarks of UL LLC © 2019 All Rights Reserved.